

DEPARTEMENT D'ILLE ET VILAINE

COMMUNE DE ST MALO  
REHABILITATION DU RESEAU AEP  
RUE DE DINAN ET RUE BROUSSAIS

Maitrise d'Ouvrage



Maitrise d'Ouvre



OUEST TP

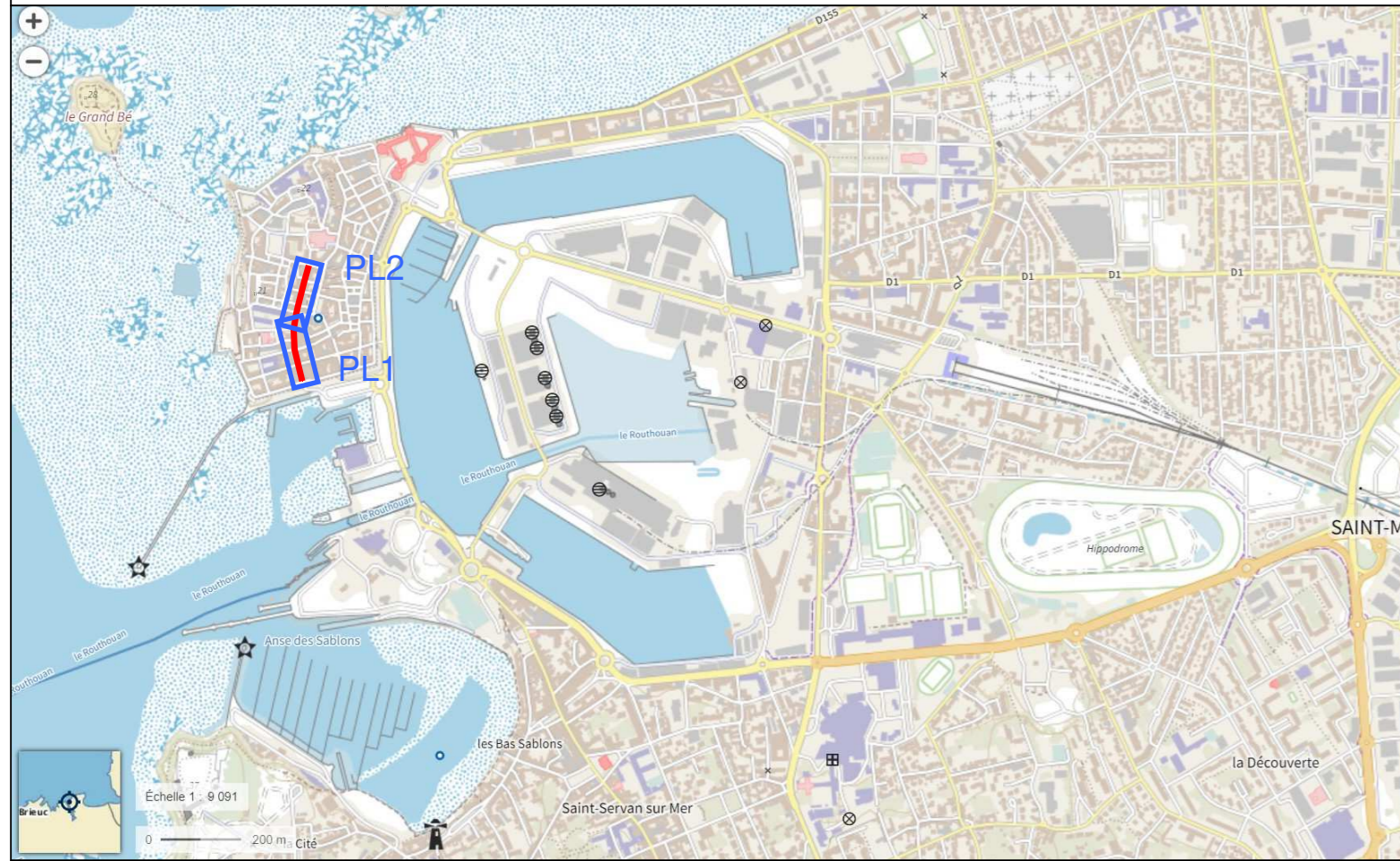
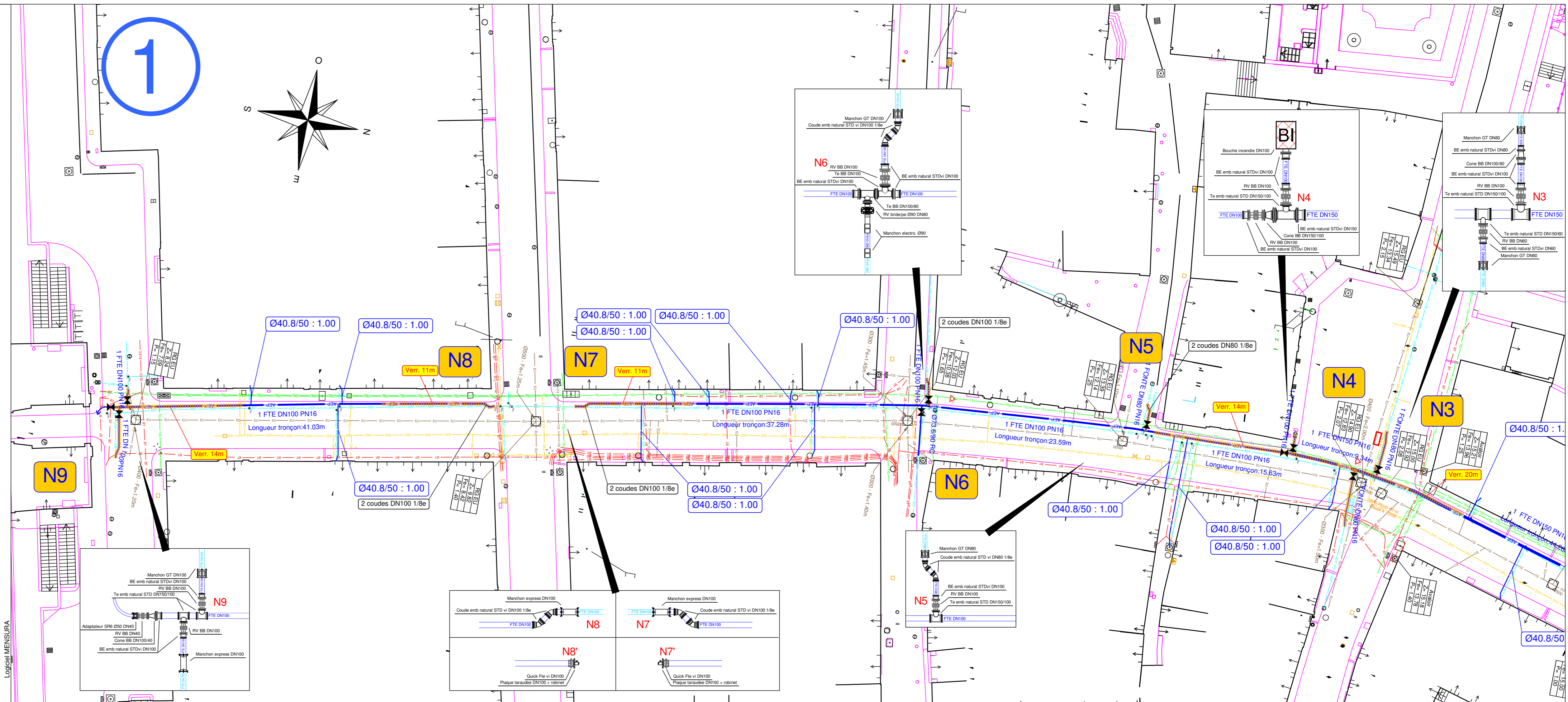
Parc d'Activité Les Vignes Chasles  
35120 - Roz-Landrieux  
Tél : +33(0)2 99 80 69 61  
Fax : +33(0)2 99 80 69 68

Site web : www.ouesttp.fr

PLAN D'EXECUTION

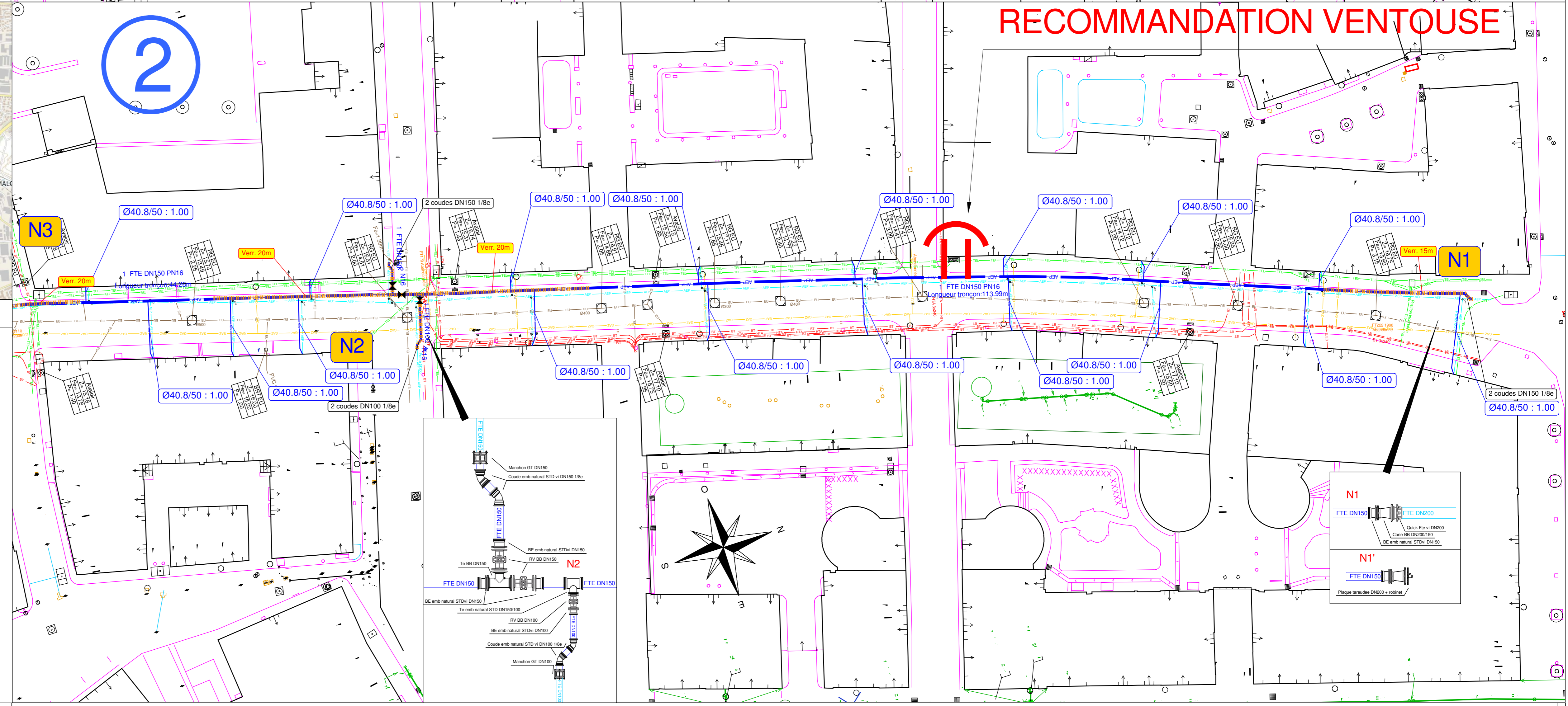
Systèmes de coordonnées :	Planimétrie :	Altimétrie :
	RGF93 - L93	NGF- IGN69
Références :	Client	Interne
		121940

ECHELLE :	DATE :	ETABLI PAR :	VERIFIE PAR :
1/250	13/09	MP	
Indice	Date	Objet	
A	13/19		



LEGENDE

- AEP projeté
- AEP projeté verrouillé
- AEP existant
- AEP provisoire
- AEP abandonné
- GAZ
- BT
- HTA
- TEL
- Béton - Type K
- Béton - Type L
- Eclairage
- Réseau unitaire
- ↔ RV
- ↔ Purge
- ↔ Vidange
- ↔ Ventouse



Axe : N2 - N1  
Réseau : AEP  
Echelle X : 1/191  
Echelle Z : 1/191  
Plan Comp : 14.4

	0+00	0+55	1+00	1+50	2+00	2+50	3+00	3+50	4+00	4+50	5+00	5+50	6+00	6+50	7+00	7+50	8+00	8+50	9+00	9+50	10+00	10+50	11+00	11+50	12+00	12+50	13+00	13+50	14+00	14+50	15+00	15+50	16+00						
Terrain	16.52	16.55	16.58	16.61	16.64	16.67	16.70	16.73	16.76	16.79	16.82	16.85	16.88	16.91	16.94	16.97	17.00	17.03	17.06	17.09	17.12	17.15	17.18	17.21	17.24	17.27	17.30	17.33	17.36	17.39	17.42	17.45	17.48	17.51	17.54	17.57	17.60		
Z Projet AEP	16.52	16.52	16.52	16.52	16.52	16.52	16.52	16.52	16.52	16.52	16.52	16.52	16.52	16.52	16.52	16.52	16.52	16.52	16.52	16.52	16.52	16.52	16.52	16.52	16.52	16.52	16.52	16.52	16.52	16.52	16.52	16.52	16.52	16.52	16.52	16.52	16.52	16.52	
Z de pose AEP	15.52	15.52	15.52	15.52	15.52	15.52	15.52	15.52	15.52	15.52	15.52	15.52	15.52	15.52	15.52	15.52	15.52	15.52	15.52	15.52	15.52	15.52	15.52	15.52	15.52	15.52	15.52	15.52	15.52	15.52	15.52	15.52	15.52	15.52	15.52	15.52	15.52	15.52	15.52
Profondeur AEP	1.00	1.00	1.00	1.00	1.00	1.00	1.00	1.00	1.00	1.00	1.00	1.00	1.00	1.00	1.00	1.00	1.00	1.00	1.00	1.00	1.00	1.00	1.00	1.00	1.00	1.00	1.00	1.00	1.00	1.00	1.00	1.00	1.00	1.00	1.00	1.00	1.00	1.00	
Distances AEP	0.00m	5.55m	5.55m	7.02m	1.22m	2.69m	1.57m	10.34m	2.52m	10.84m	3.52m	3.52m	12.81m	4.91m	2.92m	5.23m	6.40m	16.46m	7.35m	16.64m	6.98m	7.28m	6.77m	7.93m	7.25m	1.66m	9.08m	16.64m	6.69m	1.02m	15.89m	15.86m	7.20m	1.00m	15.72m	1.00m	15.69m	1.00m	15.66m
Filaire AEP																																							
Pentes AEP		3.3%	0.6%	1.7%	2.3%	1.7%	0.9%	0.2%	2.0%	-2.0%	-1.2%	-2.2%	-0.4%	-1.9%	-0.7%	-1.4%	-1.8%	-1.9%	-1.4%	-0.7%	-1.4%	-1.8%	-1.9%	-1.4%	-0.7%	-1.4%	-1.8%	-1.9%	-1.4%	-0.7%	-1.4%	-1.8%	-1.9%	-1.4%	-0.7%	-1.4%	-1.8%	-1.9%	